

VHF23

3 dB Light-weight VHF Stainless Steel Antenna

- Light weight stainless steel antenna especially made for sail boats
- $1/2 \lambda$ antenna design
- Full omni-directional radiation pattern
- No groundplane needed
- Sold in kits with different brackets - See "Part No."

Electrical Specifications:

Frequency	156 - 162.5 MHz (International Maritime VHF-band)
Bandwidth	6.5 MHz
Impedance	50 ohm
VSWR	< 1.5
Polarisation	Vertical
Gain	3 dB (Marine), 0 dBd, 2.1 dBi
Max. Input Power	150 W

Mechanical Specifications:

Color	Polished stainless steel and chrome
Height	Approx. 950 mm
Mounting	With supplied bracket (See "Part No.")
Mounting place	On deck, rail or mast depending on bracket type
Materials	Stainless steel, POM and chrome plated solid brass
Operating temperature	-55C to +70C (IEC 60068-2-1, IEC 60068-2-2)
Connector	UHF-female
Cable	No cable supplied
Ingress Protection	IP66
Serial no.	On product label



Datasheet

2 / 4

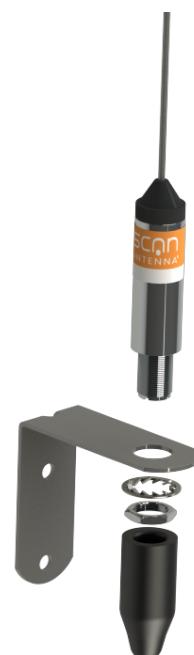
Ordering information:

P/N	11023-141 (Antenna + Wall/Rail Mount in Polybag)
P/N	11023-211 (Antenna + Mast/Wall Mount in Polybag)
P/N	11023-212 (Antenna + Mast/Wall Mount in Carton tube)
P/N	11023-431 (Antenna + 1"-11 Nut in Polybag)
P/N	11023-432 (Antenna + 1"-11 Nut in Carbon tube)
P/N	11023-451 (Antenna + 1"-14 Adapter in Polybag)
P/N	11023-452 (Antenna + 1"-14 Adapter in Carton tube)

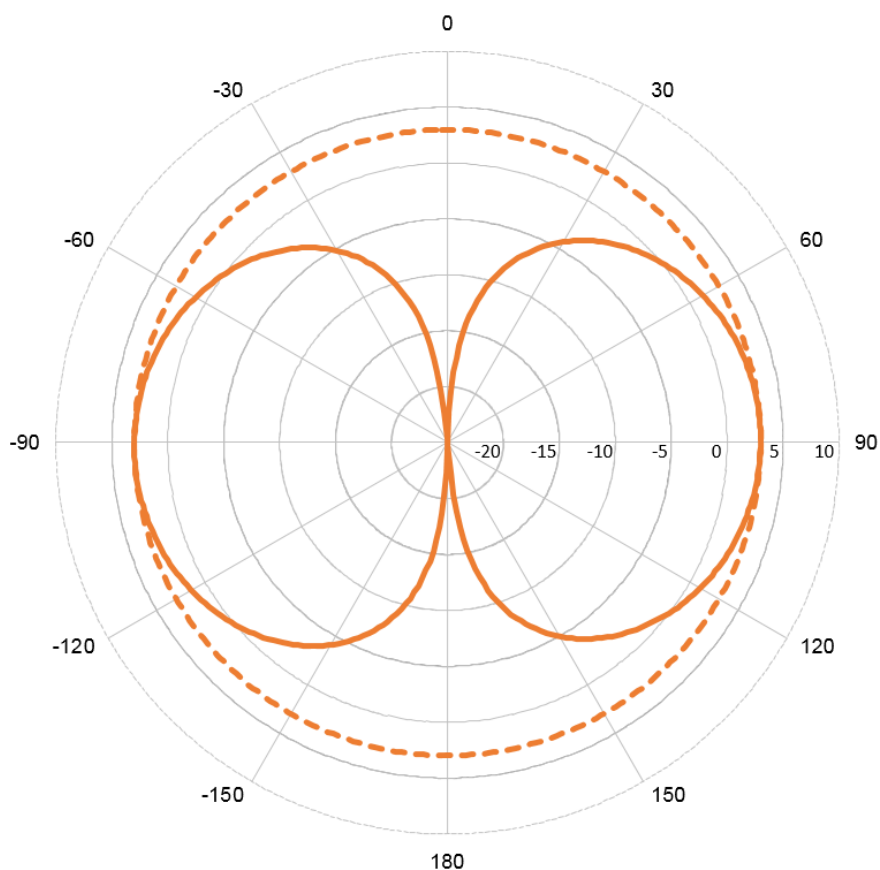
Packaging Information:

Type	See Part No.
Size	Approx. 1.1 m

Outline Drawing



Typical Radiation Pattern



Typical VSWR

