

BMP1-7-27-5F

2G/3G/4G Bumper Mount Antenna

01/04/2016 V2



BMP1-7-27-5F

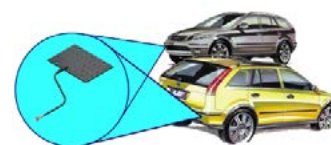
Covert application

Robust over moulded construction

Designed to mount in vehicle bumper / fender

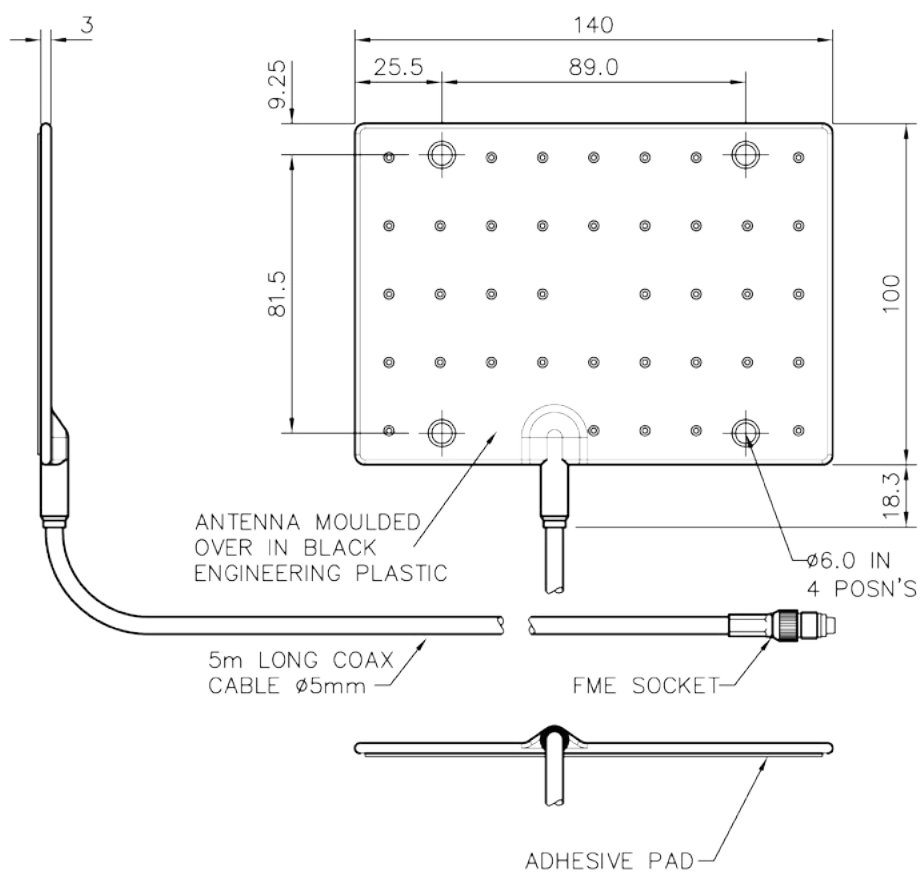
The Panorama Bumper Mount Antenna is designed for covert operations and other applications which require a vehicle antenna that is effectively invisible.

Mounted in the vehicle's bumper, installation requires no drilling and is invisible from the outside of the car.

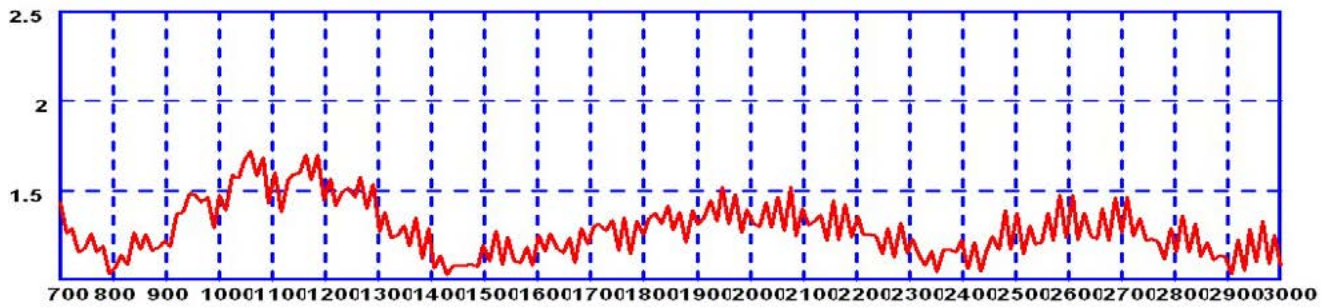


Antenna positioning

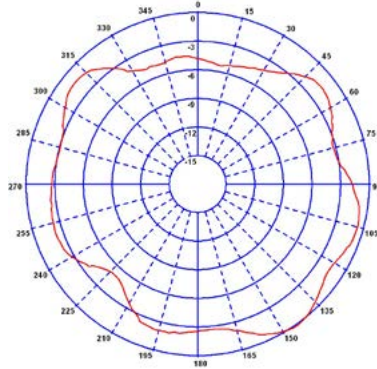
Technical Drawing



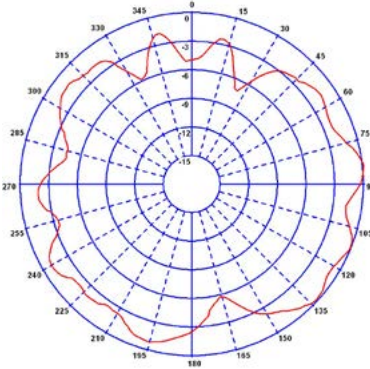
Typical VSWR*



Typical H-Plane* (900MHz)



Typical H-Plane* (1800MHz)



* All electrical measurements taken in free space with 5m (17') of cable. Exact installed position in bumper will affect patterns and VSWR response.

Part No.	
BMP1-7-27-5F	
Electrical Data	
Frequency Range (MHz)	698-960 / 1300-2700
Peak Gain: Isotropic	2dBi (in free space)
Compared to ¼ wave	0dB (in free space)
Typical VSWR	≤2.5:1
Polarisation	Vertical
Pattern	Omn-directional (in free space)
Impedance	50Ω
Max Input Power (W)	25
Mechanical Data	
Dimensions (mm)	Length 140 (5.51")
	Width 100 (3.94")
	Thickness 4 (0.16") (including adhesive pad)
Operating Temp (°C)	-40° / +80°C (-40° / 176°F)
Material	TPE
Colour	Black
Mounting Data	
Fixing	Adhesive pad & 4 × fixing holes
Cable Data	
Type	CS29
Diameter (mm)	5 (0.2")
Length (m)	5 (16')
Termination	FME Socket



Panorama Antennas Ltd
Frogmore, London, SW18 1HF, United Kingdom

T: +44 (0)20 8877 4444
F: +44 (0)20 8877 4477

E: sales@panorama-antennas.com
www.panorama-antennas.com

Waiver: The data given above is indicative of the performance of the product/s under particular conditions and does not imply a guarantee of performance. These specifications are subject to change without notice.

Copyright © Panorama Antennas Ltd. All rights reserved.